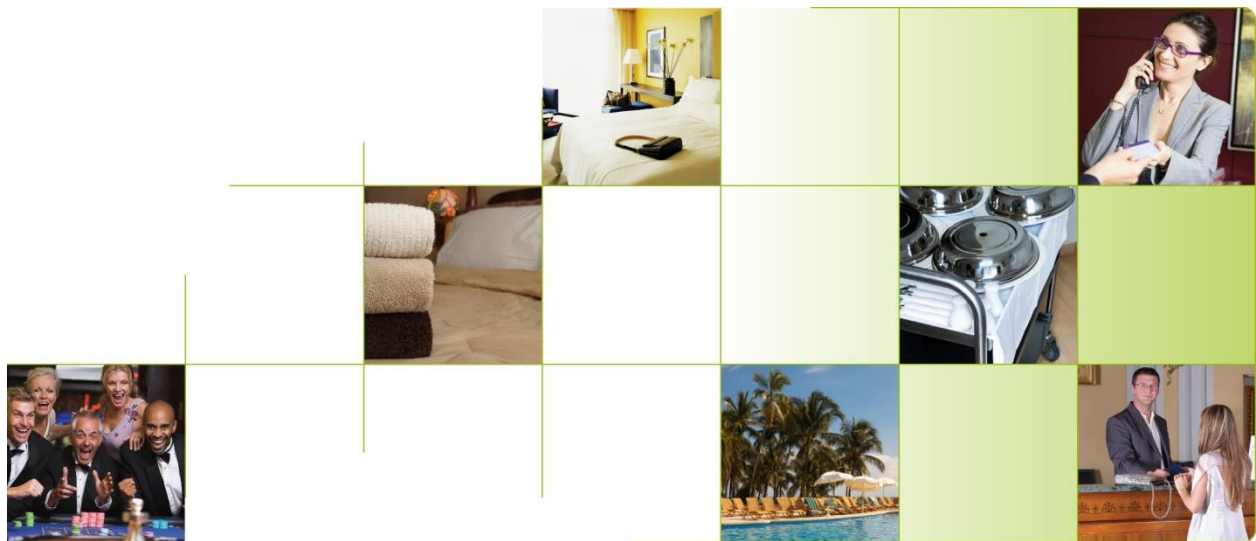


micros[®]



Configuring an OPERA Workstation for Windows 8

Copyright

© 2012 MICROS Systems, Inc. All rights reserved. No part of this publication may be reproduced, photocopied, stored on a retrieval system, or transmitted without the express prior written consent of the publisher. MICROS Systems, Inc. retains the right to update or change the contents of this document without prior notice. MICROS Systems, Inc. assumes no responsibility for the contents of this document.

OPERA is a trademark of MICROS Systems, Inc.

On Oracle and the *On Oracle* logo are trademarks of Oracle Corporation.

Information in this document is subject to change without notice.

MICROS Systems, Inc. makes no warranty of any kind with regard to this material, including but not limited to the implied warranties of marketability and fitness for a particular purpose.

MICROS Systems, Inc. shall not be liable for errors contained herein or for incidental or consequential damages in connection with the furnishing, performance, or use of this material.

Document Author: OPERA Global Technical Services

*MICROS Systems, Inc.
7031 Columbia Gateway Drive
Columbia, MD 21046
(443) 285-8000 / Fax: (443)-285-6505*

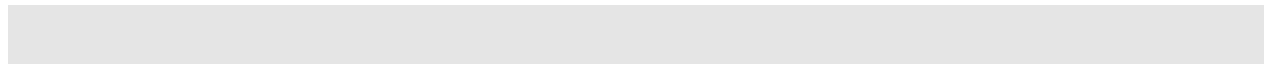
Contents

Intended Audience4

Introduction.....4

Browser Settings.....4

Installing Client Side Applications.....7



Intended Audience

This document is intended for anyone responsible for installing and configuring an OPERA workstation running on Windows 8

Introduction

This document describes the installation and configuration steps that are necessary for OPERA to function on the Windows 8 operating system.

Please note the following:

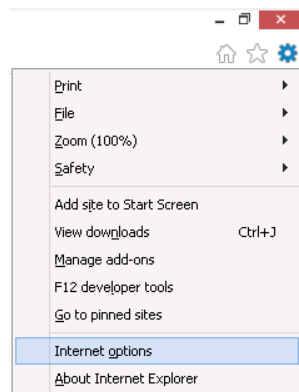
- Windows 8 is certified as of Opera V5.0.04.00 E3 which includes the below SCR's.
 - 244830: WINDOWS8: OPERAPRINT.JS:SCRIPT5022: InvalidCharacterError
 - 244828: WINDOWS8: TERMREG - Windows Version: Unknown
- OPERA will only run on the Windows 8 desktop interface because the Windows 8 Metro Interface does not support Active X controls.

Browser Settings

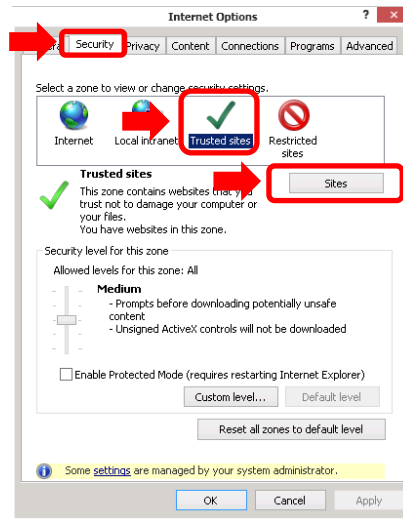
There are several places where changes will need to be made to the client machines Internet Explorer options.

Trusted Site Setting:

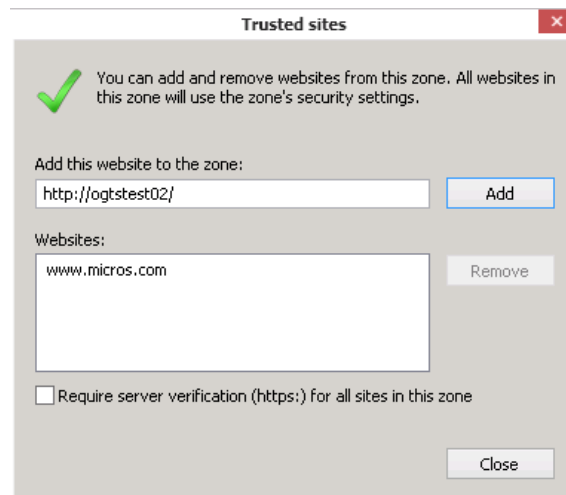
You will need to add any Application Servers and possibly variations of the Application Server name to the browsers trusted sites. Open an IE browser and go to the Tools Menu (Alt + X) and select Internet Options



Select the Security Tab on the Internet Options Menu. Select Trusted Sites then click on the Sites button.



Add the Application Server(s) name you must also uncheck the 'Require server verification (https) for all sites in this zone' check box.



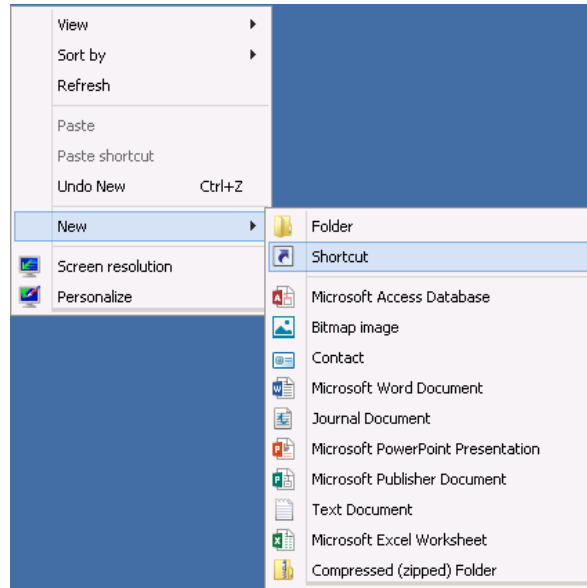
Disable FrameMerging:

Internet Explorer 8 and above has a default mechanism of sharing session data as all IE windows are maintained by a parent process. This could result in freezing issues when users are working in multiple windows and one session is busy processing request.

This feature of Internet Explorer can be disabled using 2 different methods.

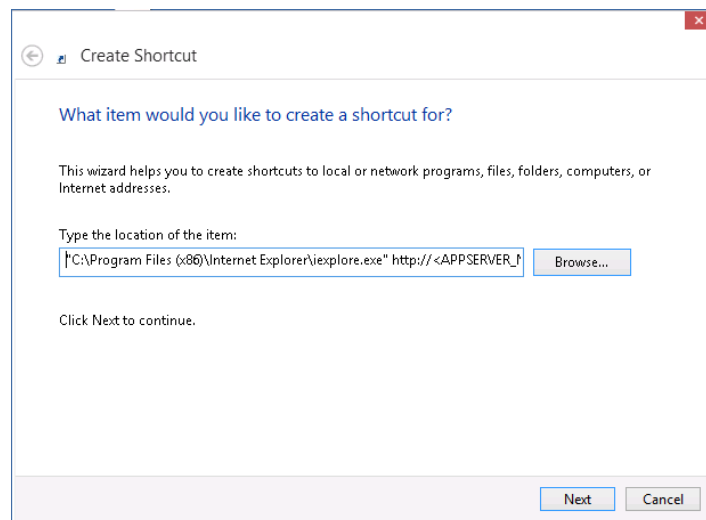
Method 1: Add `-noframemerging` parameter to your Internet explorer shortcut

1. Right click anywhere on the desktop and select 'New' then 'Shortcut'



2. Type the following in the 'Type the location of the item' field (Replace the APPSERVER_NAME with the actual name of the application server)

"C:\Program Files (x86)\Internet Explorer\iexplore.exe" http://<APPSERVER_NAME> -noframemerging



3. Click 'Next', enter a name for your Shortcut and click 'Finish'

Method 2: Add the FrameMerging registry string value in the registry to disable FrameMerging

Start -> Run -> REGEDIT -> Navigate to HKEY_LOCAL_MACHINE\ Software\Microsoft\Internet Explorer\Main -> Right click -> New String Value -> Enter FrameMerging Double click on FrameMerging on right window and enter Value 0

Installing Client Side Applications

When installing the Client Side Applications, you can either pre-install them or just use the OperaLogin page to auto load the applications

Below are the steps to MANUALLY install the Client Side Applications.

Adobe Acrobat Reader:

Note: If installing the client utilities from OPERA Login, - Adobe Acrobat Reader installation will start automatically while installing OPERA Print Control.

Connect to the Application Server and install Adobe Acrobat from the OPERA login page, or by entering the following URL:

<http://<appserverhost>/InstallAdobe.exe>
 (replace <appserverhost> with the name of your application server)



Click Run and follow the prompts to install the Adobe Acrobat Reader.

OPERA Regterm Utility:

Following the same process as Adobe, connect to the Application Server and install the RegTerm utility using the following URL:

<http://<appserverhost>/installRegterm.exe>
 (replace <appserverhost> with the name of your application server)

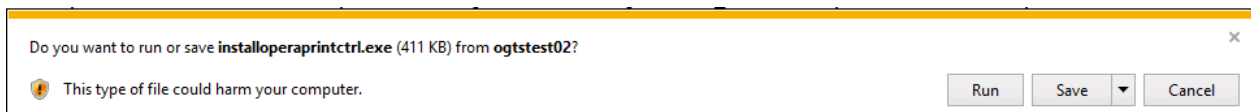


Click Run and follow the prompts to install the OPERA RegTerm Utility.

OPERA Print Control:

Following the same process, connect to the Application Server and install the OPERA Print Control utility using the following URL:

<http://<appserverhost>/installOperaPrintCtrl.exe>
 (replace <appserverhost> with the name of your application server)

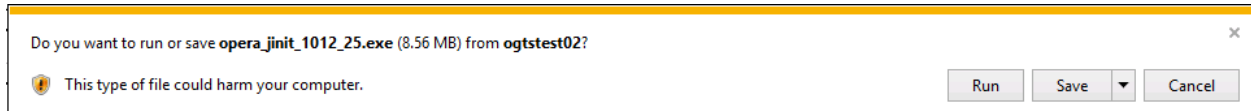


Click Run and follow the prompts to install the OPERA Print Control Utility.

Oracle Jinitiator:

Following the same process, connect to the Application Server and install the Oracle Jinitiator using the following URL:

http://<appserverhost/opera_jinit_1012_25.exe
 (replace <appserverhost> with the name of your application server)



Click Run and follow the prompts to install the Oracle Jinitiator.

The following directories should exist after the Jinitiator installation completes:

- C:\Program Files\Oracle\Jinitiator 1.3.1.25\bin\hotspot (32-bit Windows)
- C:\Program Files (x86)\Oracle\Jinitiator 1.3.1.25\bin\hotspot (64-bit Windows)

Screen Painter:

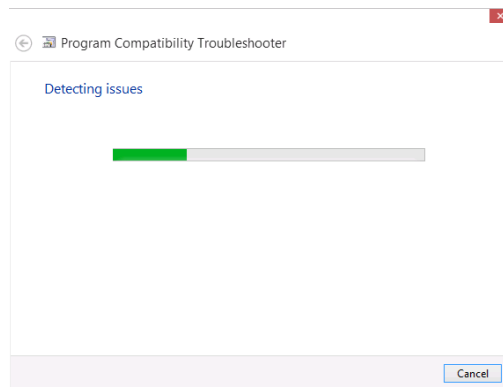
There has been some compatibility issues between Windows 8 and the Screen Painter utility installer at the time this document was created. Below are the workaround steps to install the Screen Painter Utility on a Windows 8 machine:

Connect to the Application Server and install the Screen Painter utility using the following URL:

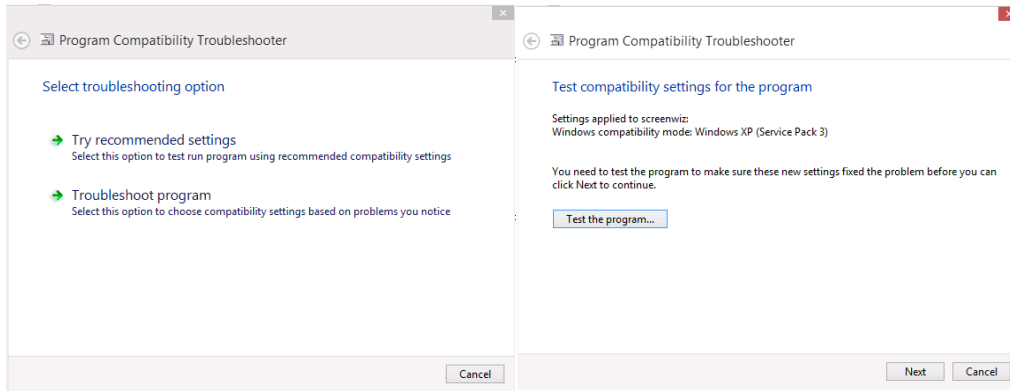
<http://<appserverhost/installScreenWiz.exe>
 (replace <appserverhost> with the name of your application server)



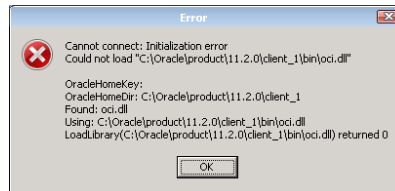
Click Run and follow the prompts to install the Screen Painter utility -> Once the utility is installed, navigate to the C:\Program Files (x86)\Micros Systems, Inc\Opera\ScreenWiz directory -> Right click on **screenwiz.exe** and select **Troubleshoot compatibility** -> The system will attempt to detect the compatibility issues



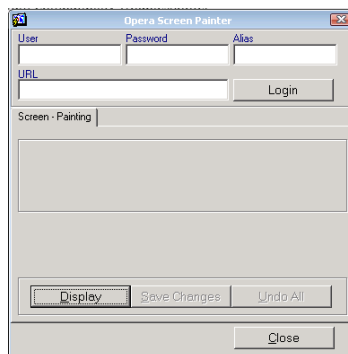
Select 'Try recommended settings' then select 'Test the program'



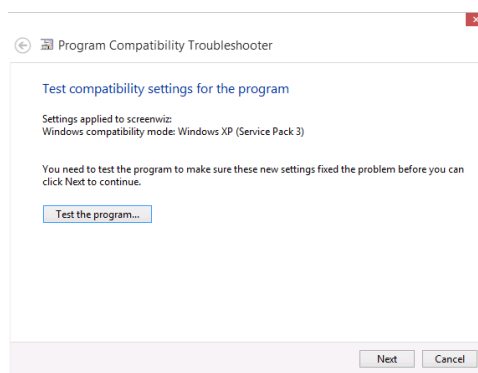
Click OK on the following error:



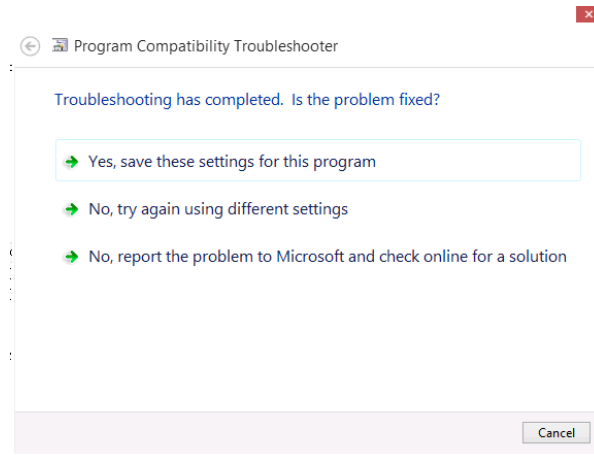
You will be presented with the Opera Screen Painter screen. Click Close.



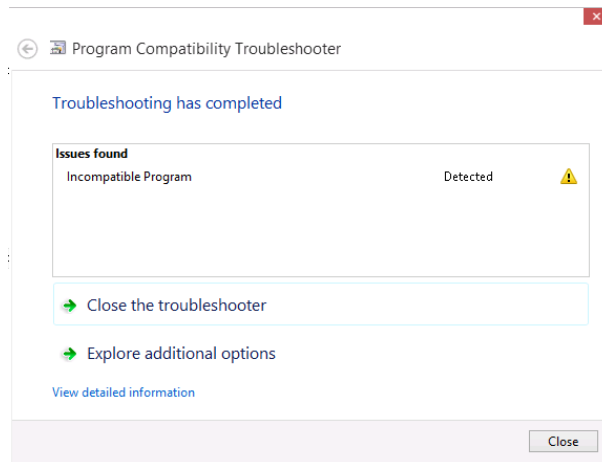
Click 'Next' on the Program Compatibility Troubleshooter screen



Select 'Yes, save these settings for this program'



Select 'Close the troubleshooter'



Login to Opera and test the Screen Painter utility.